



TATA INTRA & TATA 407 BUS

Innovation in Bus Body Solutions

We understand the
importance of innovation
and professionalism



TATA INTRA — BUS OVERVIEW



The **TATA Intra Bus Kit** by **Raas Creations** is a robust, compact, and efficiently engineered bus body solution designed specifically for the TATA Intra platform. Ideal for short-distance passenger transport, school routes, and institutional needs, this kit offers a balance of safety, strength, and style.

Crafted with precision, the modular structure features high-grade GI tubing, pre-coated metal panels, and a corrosion-resistant frame for extended durability. Its lightweight construction enables better fuel efficiency while ensuring a smooth ride across both urban and semi-rural terrains. The kit's easy-to-assemble design reduces turnaround time, making it a practical choice for rapid deployment and low-maintenance operation.

BOTH VERSIONS AVAILABLE

A/C

NON A/C

TATA INTRA BUS



KEY HIGHLIGHTS OF INTRA BUS



TATA INTRA BUS

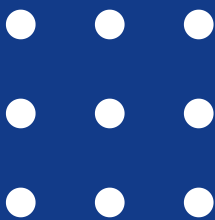


- Robust GI tube structure (30x30x1.5 mm) for frame, pillars, cant rail, roof, and back
- 12 mm plywood flooring with vinyl finish for durability and easy maintenance
- Pre-painted GI side and roof panels (1 mm) for corrosion resistance and clean aesthetics
- Sliding glass windows with aluminium sections for improved ventilation
- Readymade TATA Magic doors (rear and side) for quick installation and standardized access
- FRP rear panelling (inside & outside) for added strength and clean finish
- Electricals include 3 roof LED lights, 4 side marker lamps, tail lamps, and number plate light
- Passenger-friendly seating with 2x1 hatchback seats for comfort and space optimization
- Accessories include First Aid Box, Fire Extinguisher, and Battery Box Handle
- Optional engine-driven AC system for enhanced cabin comfort

Body Dimensions:		
Length	3050 mm (Inside)	
Width	1615 mm (Inside)	
Height	1400 mm (Indide) FROM THE FLOOR	
WEIGHTS (in KG):		
Body Weight		
STRUCTURAL DETAILS:		
S. No.	Item	Specification
(1.) STRUCTURE FLOOR		
1 (a)	Cross Bearier	75 X 40 X 40 X 3mm Formed SECTION With BOX
1 (b)	Floor Longitude	50 x 30 x 30 x 2 MM FORMED SECTION
1 (c)	U BOLTS	U BOLTS + 8 MM PLATE
(2.) STRUCTURE SIDES		
2 (a)	PILLARS	30 x 30 x 2.0 MM HR TUBE
2 (b)	CROSS	30 x 30 x 2.0 MM HR TUBE
2 (c)	CANT RAIL	30 x 30 x 2.0 MM HR TUBE
2 (d)	SKIRT RAIL	Angle 25 x 25 x 3 MM
2 (e)	MUDGUARD	Angle 25 x 25 x 3 MM
3 (F)	FOOT STEP	Angle 25 x 25 x 3 MM
3	BACK/REAR	30 x 30 x 1.5 MM HR TUBE
4	FRONT	NOT APPLICABLE
5	ROOF	30 x 30 x 1.5 MM HR TUBE

TATA INTRA

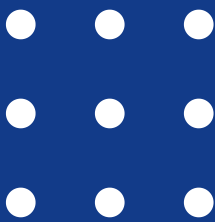
BUS SPECS SHEET



(6.) PANNELING		
6 (a)	ROOF PANEL	GI SHEET 1 MM
6 (b)	SIDE PANEL	GI SHEET 1 MM
7	FRONT	NOT APPLICABLE
8	REAR	FRP (INSIDE & OUTSIDE)
8 (a)	REAR FOOR STEP	NOT APPLICABLE
9	INNER PANELLING	PRE PAINTED SHEET 0.6 mm Thk.
10	TRUSS PANELS	PRE PAINTED SHEET 0.6 mm Thk.
11	FLOOR	12 MM PLYWOOD WITH VINYL
11 (a)	CABIN FLOOR	NOT APPLICABLE
12	DOOR	
12 (a)	Driver DOOR	N A (LH & RH NOT APPLICABLE)
12 (b)	Passenger Door	READY MADE TATA MAGIC RH SIDE ONLY
12 (c)	REAR DOOR	READY MADE TATA MAGIC BUS
13	WINDOWS	ALUMINIUM SECTIONS WITH GLASS SLIDING WINDOW
14	SEATS	2X1 HIGH BACK SEATS WITH HANDLE
15	GLASSES	ALL GLASSES WINDOWS TOUGHNED
16	WINDSCREEN	NOT APPLICABLE
17	DASHBOARD	NOT APPLICABLE

TATA INTRA

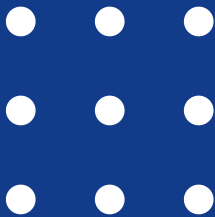
BUS SPECS SHEET



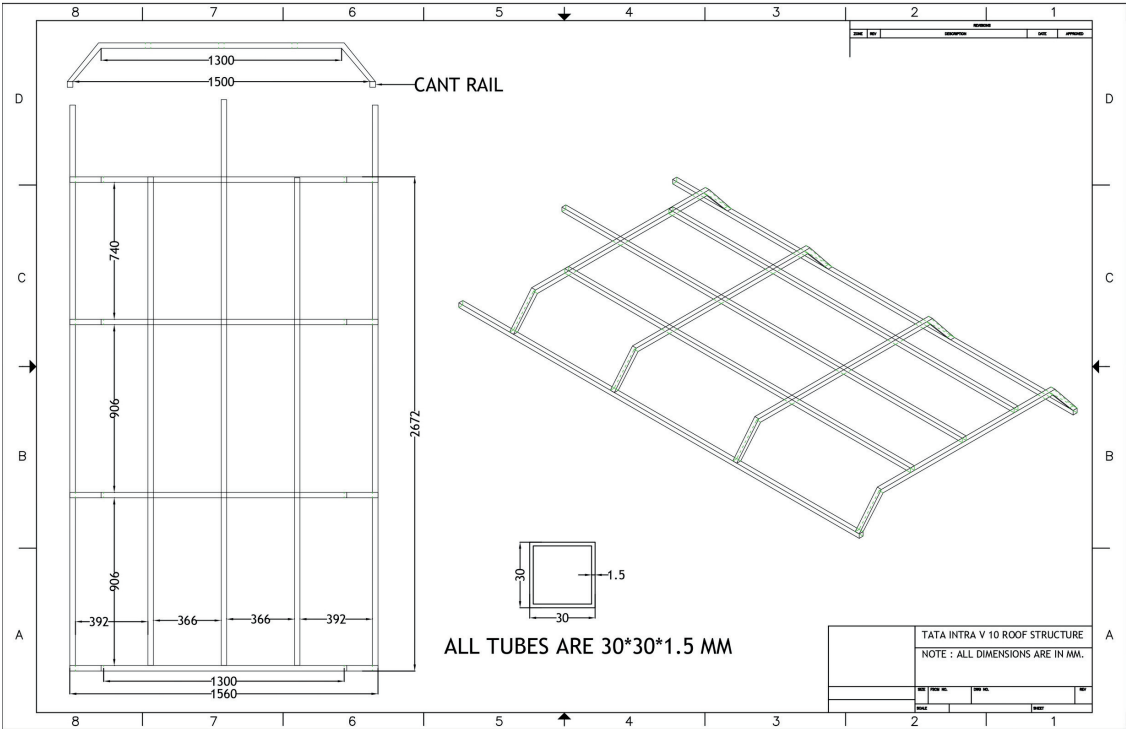
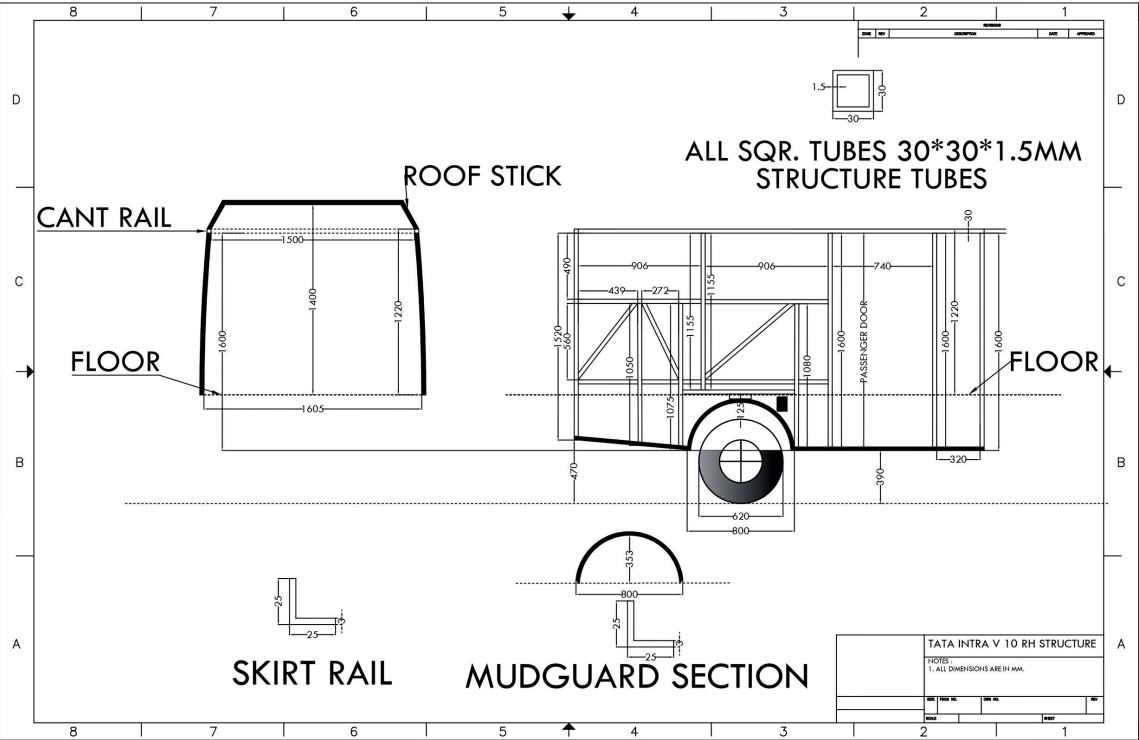
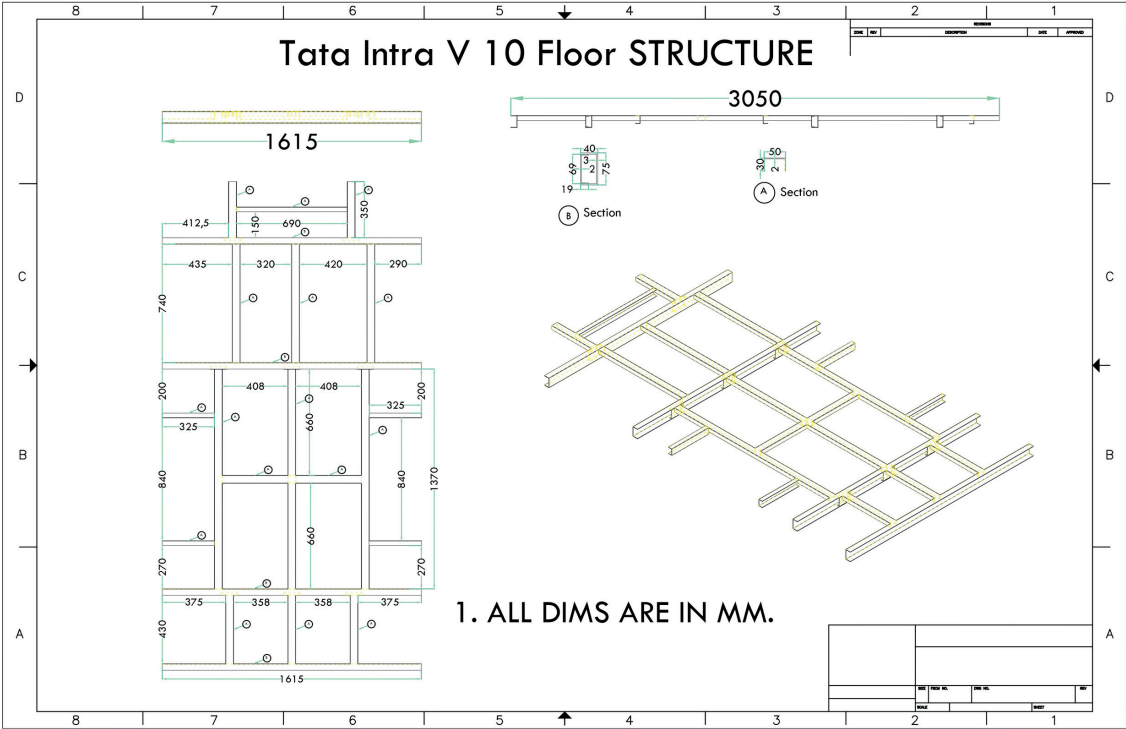
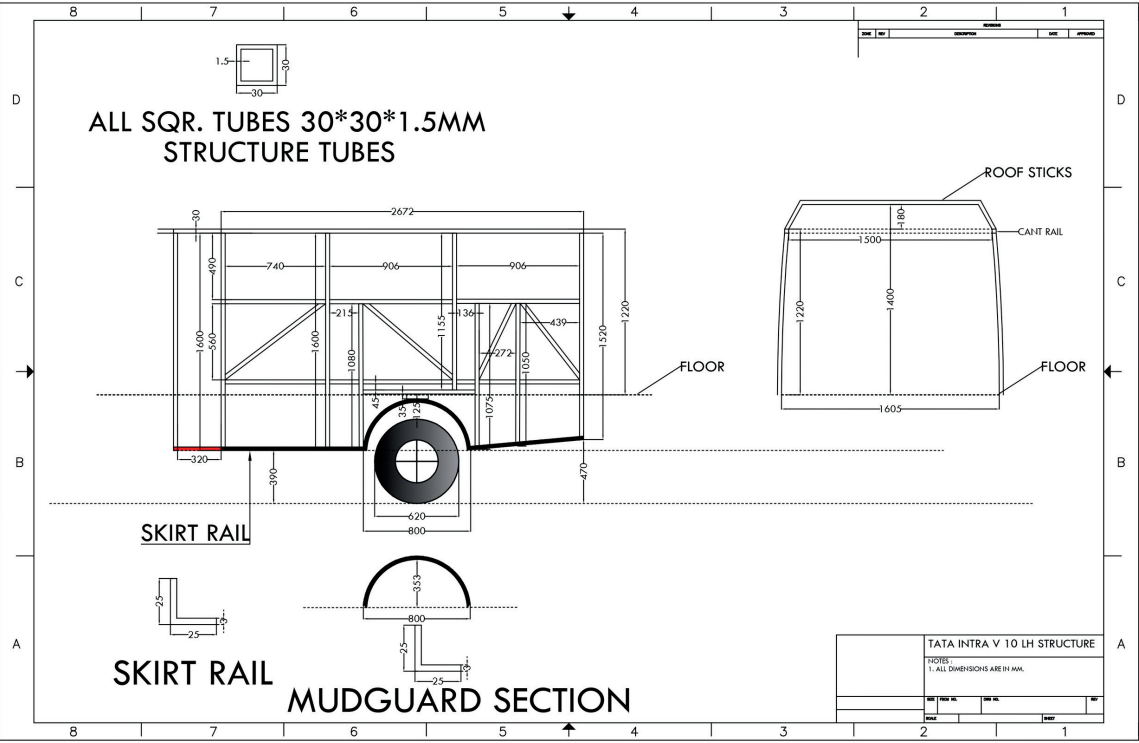
18	ELECTRICALS	As Per BUS
18 (a)	HEADLAMP	NOT APPLICABLE
18 (b)	TAIL LAMP	03 Sets. (AUTOPAL/RINDER/LUMEX)
18 (c)	INSIDE	STRIP ROOF LED Light , QTY. - 02 Nos
18 (d)	FOOT STEP LIGHT	01 Nos.
18 (e)	NUMBER PLATE LIGHT	01 Nos.
18 (f)	Side MARKER LAMPS	04 Nos. (02 Nos. Each Sides)
18 (g)	WIPERS	NOT APPLICABLE
18 (h)	TOP MARKER LAMPS	04 Nos.
18 (i)	CABIN LIGHT	NOT APPLICABLE
18 (j)	CHARGING BOARD	AVAILABLE Between Seats
19	Accessories	
19 (a)	First AID Box	01 Nos.
19 (b)	Fire EXTINGUISHER	01 Nos. ,CAPACITY - 2Kgs
19 (c)	HANDLES FOR PASSENGERS	Attached with Seats
19 (d)	Battery Box Handle	01 Nos.
19 (e)	Disel Tank Cover	01 Nos.
20	AC	SIDWAL MAKE , Engine Driven , Free FLOW

TATA INTRA

BUS SPECS SHEET



TATA INTRA BUS DRAWING



TATA INTRA BUS IMAGES



TATA INTRA BUS INTERIOR IMAGES



TATA 407 BUS OVERVIEW



TATA 407 BUS



The TATA 407 Bus Kit by Raas Creations is a durable and high-capacity solution designed for the TATA 407 chassis. With a 28-seater bench layout, this kit is ideal for city and rural transport needs.

Built using 2 mm thick GI tubes and GPSP sheet paneling, the structure offers excellent strength and corrosion resistance. It features a 12 mm plywood floor with vinyl finish, sliding aluminum windows, toughened rear glass, and powder-coated hatracks. Epoxy coating and PU paint enhance weather protection, while safety is ensured with a fire extinguisher, medical kit, and anti-rattle construction. Designed for reliability, safety, and long life—even on rough roads.

BOTH VERSIONS AVAILABLE

A/C

NON A/C

KEY HIGHLIGHTS

TATA 407 BUS



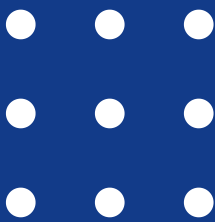
- Heavy-duty cross bearer (75x40x3 mm) and floor longitudes (50x30x2 mm) for robust base structure
- 40x40x2 mm HR tubular pillars, cant rail, and rear for added structural integrity
- GI sheet panels (1 mm) for roof and side panels, ensuring durability and weather resistance
- Pre-painted inner and truss panels (0.6 mm thick) for a clean and corrosion-resistant finish
- FRP rear paneling (inside and outside) for lightweight durability and aesthetics
- U-bolts with 8 mm plate reinforcements for chassis mounting
- Skirt rail, footstep, and mudguard made from 40x40x3 mm angle sections

TATA 407 BUS



Body Dimensions:		
Length	3530 mm (Inside)	
Width	1760 mm (Inside)	
Height	1630 mm (Indide) FROM THE FLOOR	
WEIGHTS (in KG):		
Body Weight		
STRUCTURAL DETAILS:		
S. No.	Item	Specification
(1.) STRUCTURE FLOOR		
1 (a)	Cross Bearier	75 X 40 X 40 X 3mm Formed SECTION With BOX
1 (b)	Floor Longitude	50 x 30 x 30 x 2 MM FORMED SECTION
1 (c)	U BOLTS	U BOLTS + 8 MM PLATE
(2.) STRUCTURE SIDES		
2 (a)	PILLARS	40 x 40 x 2.0 MM HR TUBE
2 (b)	CROSS	40 x 30 x 2.0 MM HR TUBE
2 (c)	CANT RAIL	30 x 30 x 2.0 MM HR TUBE
2 (d)	SKIRT RAIL	Angle 40 x 40 x 3 MM
2 (e)	MUDGUARD	Angle 40 x 40 x 3 MM
3 (F)	FOOT STEP	Angle 40 x 40 x 3 MM
3	BACK/REAR	40 x 40 x 2.0 MM HR TUBE
4	FRONT	NOT APPLICABLE
5	ROOF	40 x 40 x 2.0 MM HR TUBE

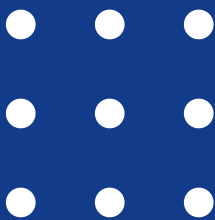
TATA 407
BUS SPECS SHEET



(6.) PANNELING		
6 (a)	ROOF PANEL	GI SHEET 1 MM
6 (b)	SIDE PANEL	GI SHEET 1 MM
7	FRONT	NOT APPLICABLE
8	REAR	FRP (INSIDE & OUTSIDE)
8 (a)	REAR FOOR STEP	NOT APPLICABLE
9	INNER PANELLING	PRE PAINTED SHEET 0.6 mm Thk.
10	TRUSS PANELS	PRE PAINTED SHEET 0.6 mm Thk.
11	FLOOR	12 MM PLYWOOD WITH VINYL
11 (a)	CABIN FLOOR	NOT APPLICABLE
12	DOOR	
12 (a)	Driver DOOR	N A (LH & RH NOT APPLICABLE)
12 (b)	Passenger Door	Developed Door
12 (c)	REAR DOOR	Developed Door Flap Type
13	WINDOWS	ALUMINIUM SECTIONS WITH GLASS SLIDING WINDOW
14	SEATS	2X1 HIGH BACK SEATS WITH HANDLE
15	GLASSES	ALL GLASSES WINDOWS TOUGHNED
16	WINDSCREEN	NOT APPLICABLE
17	DASHBOARD	NOT APPLICABLE

TATA 407

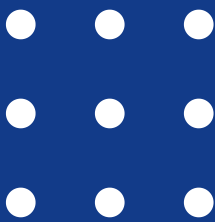
BUS SPECS SHEET



18	ELECTRICALS	As Per BUS
18 (a)	HEADLAMP	NOT APPLICABLE
18 (b)	TAIL LAMP	03 Sets. (AUTOPAL/RINDER/LUMEX)
18 (c)	INSIDE	8"x4" ROOF LED Light , QTY. - 02 Nos
18 (d)	FOOT STEP LIGHT	01 Nos.
18 (e)	NUMBER PLATE LIGHT	01 Nos.
18 (f)	Side MARKER LAMPS	04 Nos. (02 Nos. Each Sides)
18 (g)	WIPERS	NOT APPLICABLE
18 (h)	TOP MARKER LAMPS	04 Nos.
18 (i)	CABIN LIGHT	NOT APPLICABLE
18 (j)	CHARGING BOARD	4 Nos. On the Partion Panel
19	Accessories	
19 (a)	First AID Box	01 Nos.
19 (b)	Fire EXTINGUISHER	01 Nos. ,CAPACITY - 2Kgs
19 (c)	HANDLES FOR PASSENGERS	Attached with Seats
19 (d)	Battery Box Handle	01 Nos.
19 (e)	Disel Tank Cover	01 Nos.
20	AC	SIDWAL MAKE , Engine Driven , Free FLOW

TATA 407

BUS SPECS SHEET



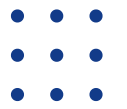
TATA 407 BUS IMAGES



IMAGE OF CKD FORM & CONTAINER LOADING



THANK YOU



We appreciate your time and interest in our **Tata 407 Bus** and **Tata Intra Bus** solutions.

At **Raas Creations**, we are dedicated to providing innovative, durable, and cost-effective bus body kits designed to match your specific requirements.

We look forward to the opportunity to collaborate and support the success of your transport initiatives.
Let's build the future of mobility, together.

www.raascreations.in

+91 9829059759

raascreates@gmail.com